

Pacific Integrated Water Resources Management (IWRM) Programme



SOPAC



IWRM Planning Programme
2nd Regional Steering Committee Meeting
Palau

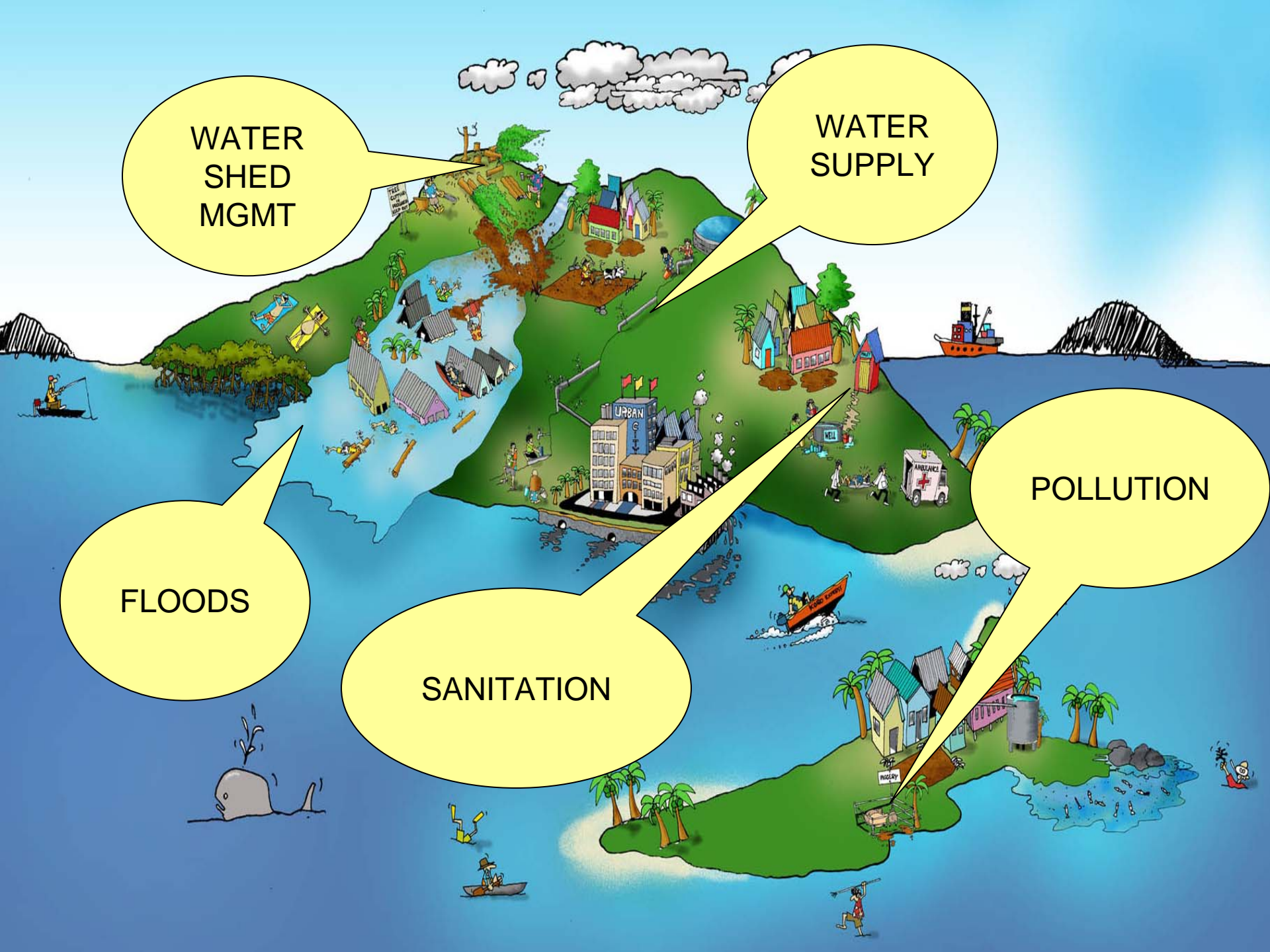
WATER
SHED
MGMT

WATER
SUPPLY

POLLUTION

FLOODS

SANITATION





Integrated Water Resources Management (IWRM)

Definition of IWRM

IWRM is a process which promotes the coordinated development and management of water, land and related resources, in order to maximise the resultant economic and social welfare in an equitable manner without compromising the sustainability of vital ecosystems (GWP).





Key Principles of IWRM

Acknowledge

- Water is finite resource essential to sustain life, development and the environment
- Management and development should be based on participatory approaches from all levels
- Women play a central role water management
- Water should be recognised as an economic good

(Dublin Conference - 1992)



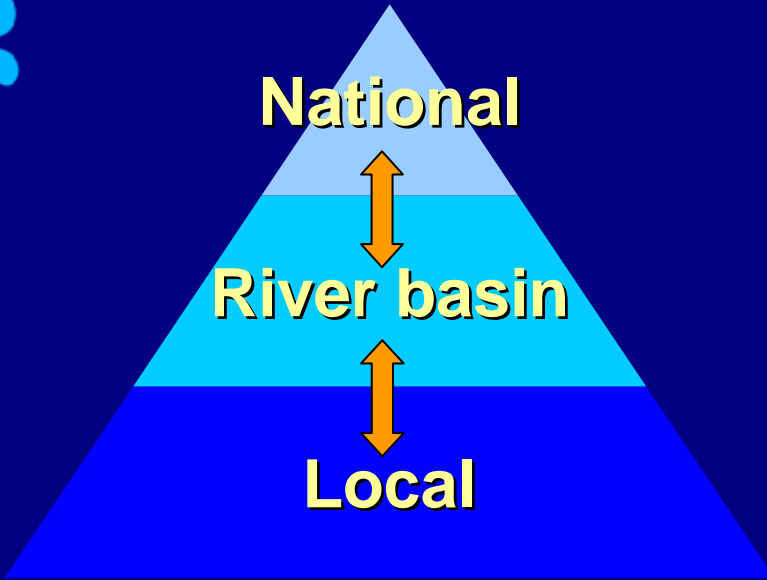


IWRM on the Ground

Practically:

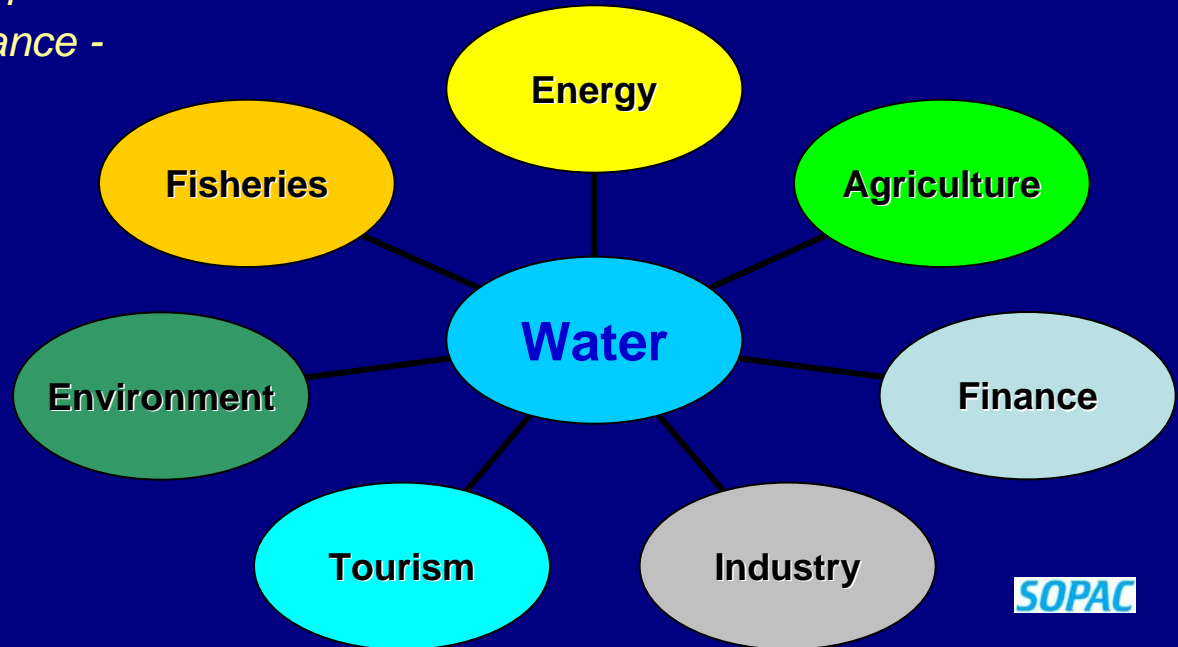
- Water resources are managed within hydrographical boundaries - PIC's as whole island ecosystems
- Inventory and use of resources - surface, groundwater and recycled water.
- Information system needs to be shared, open and transparent
- Tight links between water uses and stakeholders horizontally (across sectors) and vertically (across scales)





Integration between scales/levels of governance - vertically

Integration between sectors - horizontally



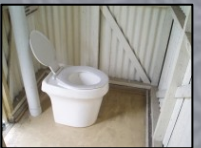


IWRM on the Ground

Practically:

- Considering environmental flows
- Balancing management of demand of water as well as resource availability
- Considering Economic and financial sustainability

(Lenton, R. and Muller, M. (eds) 2009)





IWRM- Why do we want it?

- To set common goals
- Avoid duplication of efforts and conflict
- Improve coordination and resource use
- Ensure cost-effectiveness in decision-making, planning, governance and management of water resources.
- Helps to ensure that external and non-governmental support projects contribute to national aims in a coordinated and cost-effective manner (i.e. foreign aid and NGO efforts).



Pacific IWRM Programme



- Sustainable Integrated Water Resources and Wastewater Management in Pacific Island Countries (Pacific IWRM Project)
 - Donor: Global Environment Facility (GEF) USD10.7M
 - Implementing Partners: UNDP and UNEP
 - 14 Pacific Islands Countries
 - 15 Pacific Island Focal Points
 - Design Phase: 2004 - 2008
 - Implementation Phase: 2009 - 2013
-
- National IWRM Planning Programme
 - Donor: European Union (EU) €2.8M
 - 14 Pacific Island Countries
 - Implementation Phase: 2008 - 2010

Pacific IWRM Programme Structure

Demonstration, Capture and Transfer of Best Practices in IWRM and Water Use Efficiency



SOPAC

What will country demonstration proposals be doing?

IWRM Main Intervention	Countries
Watershed Management	Federated States of Micronesia, Papua New Guinea, Palau, Samoa, Vanuatu
Wastewater Management and Sanitation	Marshall Islands, Nauru, Tuvalu
Water Resources Assessment and Protection	Cook Islands, Fiji, Niue
Water Use Efficiency and Safety	Solomon Islands and Tonga



- National Project Teams - 2 - 3 staff
- USD500, 000
- 5 years - 2009 - 2013

Pacific IWRM Programme Structure

Demonstration, Capture and Transfer of Best Practices in IWRM and Water Use Efficiency



IWRM and WUE Regional Indicator Framework



Regional & National Capacity Building and Sustainability Programme for IWRM and WUE, Knowledge Exchange, Learning & Replication



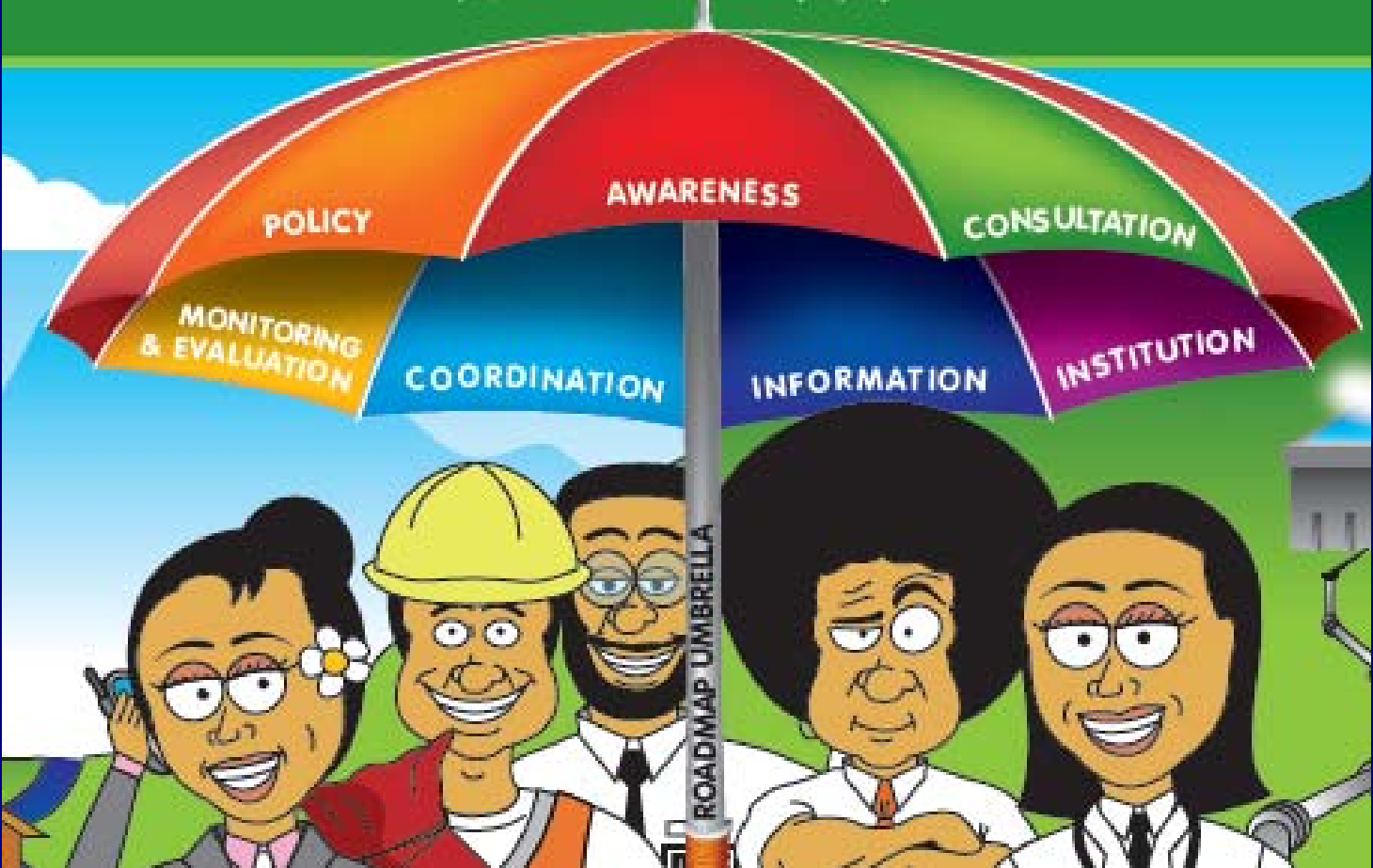
Policy, Legislative and Institutional Reform for IWRM and WUE



SOPAC



Process for IWRM planning



Pacific IWRM Programme Structure

Demonstration, Capture and Transfer of Best Practices in IWRM and Water Use Efficiency



IWRM and WUE Regional Indicator Framework



Regional & National Capacity Building and Sustainability Programme for IWRM and WUE, Knowledge Exchange, Learning & Replication



Policy, Legislative and Institutional Reform for IWRM and WUE



Project Coordination Unit (PCU)



SOPAC



The Integrated Water Resources Management (IWRM) National Planning Programme

- Funded by the ACP-EU Water Facility from 2008-2010
- Implementation in Cook Islands, Fiji, Federated States of Micronesia, Kiribati, Marshall Islands, Nauru, Niue, Samoa, Solomon Islands, Palau, Papua New Guinea, Tonga, Tuvalu, Vanuatu
- Executed by SOPAC specifically a Regional IWRM Planning Team, the GEF IWRM Team and other water sector staff members.
- Aims to help countries to improve management of water resources by supporting the development of national frameworks and plans for IWRM and Water Use Efficiency (including legislation, policy, intersectoral water coordination committees, water partnerships and water use efficiency strategies)
- Links closely to and provides an enabling environment of other on-the-ground activities and projects in countries



SOPAC



Support from the EU IWRM Planning Programme

This support is in the form of :

- Technical support - SA Economic work and KI San Policy development
- Support to consultation processes and workshops and - SI, FJ NWC and sub committee Meetings
- Regional exchange with other countries to learn from their experiences and Training - Northern Pacific IWRM training
- Staff support (Policy offer - administration, high level advocacy, expertise, etc. NU, TO and RMI and SI





Pacific IWRM Planning Programme Structure

R1: Operational Resource Centre, Improved Communication and coordination, IWRM Indicators, developed and delivery of a well managed work programme

R2: Establishing formal and informal partnerships

R3: Awareness of IWRM improved at the political, public and school level

R4: Strengthened national consultation, interim partnerships, policy consultations

R5: Commencing IWRM Governance

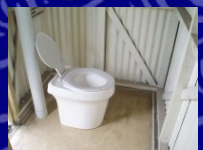
R6: Improved ability to deliver good IWRM Governance through capacity building





R1: RC, Communication and coordination, IWRM indicators

IWRM Resource Centre	www.pacificwater.org Niue and FSM
Partnership, multi-stakeholders consultations	RSC Meetings – Niue, Nadi and Palau EWC Training - North Pacific Special training sessions – Niue National Water Committee Meetings
Database for inventory of IWRM in region	Water Catalogue, PAM, Contact lists, country profiles
International and regional coordination of IWRM activities	Regional meetings, PACC Inter-regional and international meetings KHubs, IW5, IWC KHUb
Development of IWRM Indicators	Pacific Regional Indicator Framework, Freshwater Index





R2: Formal and informal partnerships

Review of IWRM examples	Newsletters, case studies, guidelines (NWAB), Stakeholder engagement framework, community participation guides, toolkits, brochures
Best practice	As above – LLEE Community Mobilisation guidelines,
Partnership development	Continued support to the Pacific Partnership Initiative on SWM





R3: Awareness of IWRM improved at the political, public and school level

Regional IWRM Communications Strategy

Communications Adviser

Media engagement through print ready media pieces, strategies, communications products

HL engagement in APWS, AWDO

Post Graduate Certificate - IWC





R4: Strengthened national consultation, interim partnerships, policy consultations

Country assistance	TA – SA, KI, NU, NA, FSM, RMI and PA Allocation policies, WSIP, Least Cost analysis, Sanitation Policy and implementation plan, scoping assessments for Water and Sanitation Policy frameworks, flood assessments, village water management plans
	Guideline development
Country self analysis	NWC's and sub committee support to consultations, Regional Meetings – roadmaps etc.





R5: Commencing IWRM Governance

Regional and interregional exchange – IWCAM, Asia Pacific

Case studies and guideline development

Support to IWRM Implementation – resource provision (TA, IEC Materials – Posters (series), Brochures (IWRM Planning, NWAB's), CD of Toolkits, newsletters



SOPAC



R6: Improved ability to deliver good IWRM Governance through Capacity Building

Collaboration with USP VWLC

Leadership Training together with the EWC for North Pacific

IWC Post Graduate Certificate Course in IWRM

Country specific training – economics, IWRM planning etc

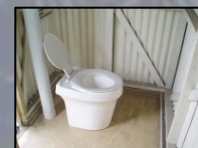


SOPAC



Pacific IWRM Planning Progress

R1: Operational Resource Centre, Improved Communication and coordination, IWRM Indicators	60% 50% 40-50%
R2: Establishing formal and informal partnerships	15 – 20%
R3: Awareness of IWRM improved at the political, public and school level	30%
R4: Strengthened national consultation, interim partnerships, policy consultations	40%
R5: Commencing IWRM Governance	40 - 50%
R6: Improved ability to deliver good IWRM Governance through capacity building	50%





Pacific IWRM Planning Budget

Total Budget EU 2,822,550M

Received to date EU 1,741,636

Categories	2009	2008	Total
Human Resources	172, 549	206,292	378,841
Consultancies	173,848	36,705	210,553
Travel	92,596	98,862	191,458
Office Equipment/vehicles and supplies	14,254	8,348	22,602
Local Action Costs	7,153	5,319	12,472
Other Costs	12,515	18,942	31,457
Administrative Costs	43,282	44,257	87,539
Total Expenditure	516, 197	418,725	934,922
Available – 2.1M			



Pacific IWRM Planning Budget

Country Allocations - needs basis

- Ball park of around 40,000 Euro
- Ranged from 10% to 70% of allocations
- Attributed to:
 - In-country TA
 - Support to NWAB Officers
 - Consultations
- Not fully utilised to date



Project Management

- Staffing
- External Evaluations - ROM 2009 and September 2010
- Audits - 2008 and 2009
- Progress Reporting - PR1 and PR2
- SC Meetings
- Extension





Future Workplan

- Focus on Country support
- Key regional components -
 - PGC IWRM Course
 - Community Participation in IWRM Planning
 - Training
 - HL engagement





Vinaka



SOPAC