

SAMOA ROAD MAP

What we have done

Process Initiation

FAO (1990'S)

IWP (2003)

SDS (2005-2007)

WASSP

Water For Life

- Water Resources
- Water & Sanitation
- Sector Oriented
- Water use and supply

Communications Strategy

- Being Implemented
- Includes visibility strategies

Situation Analysis

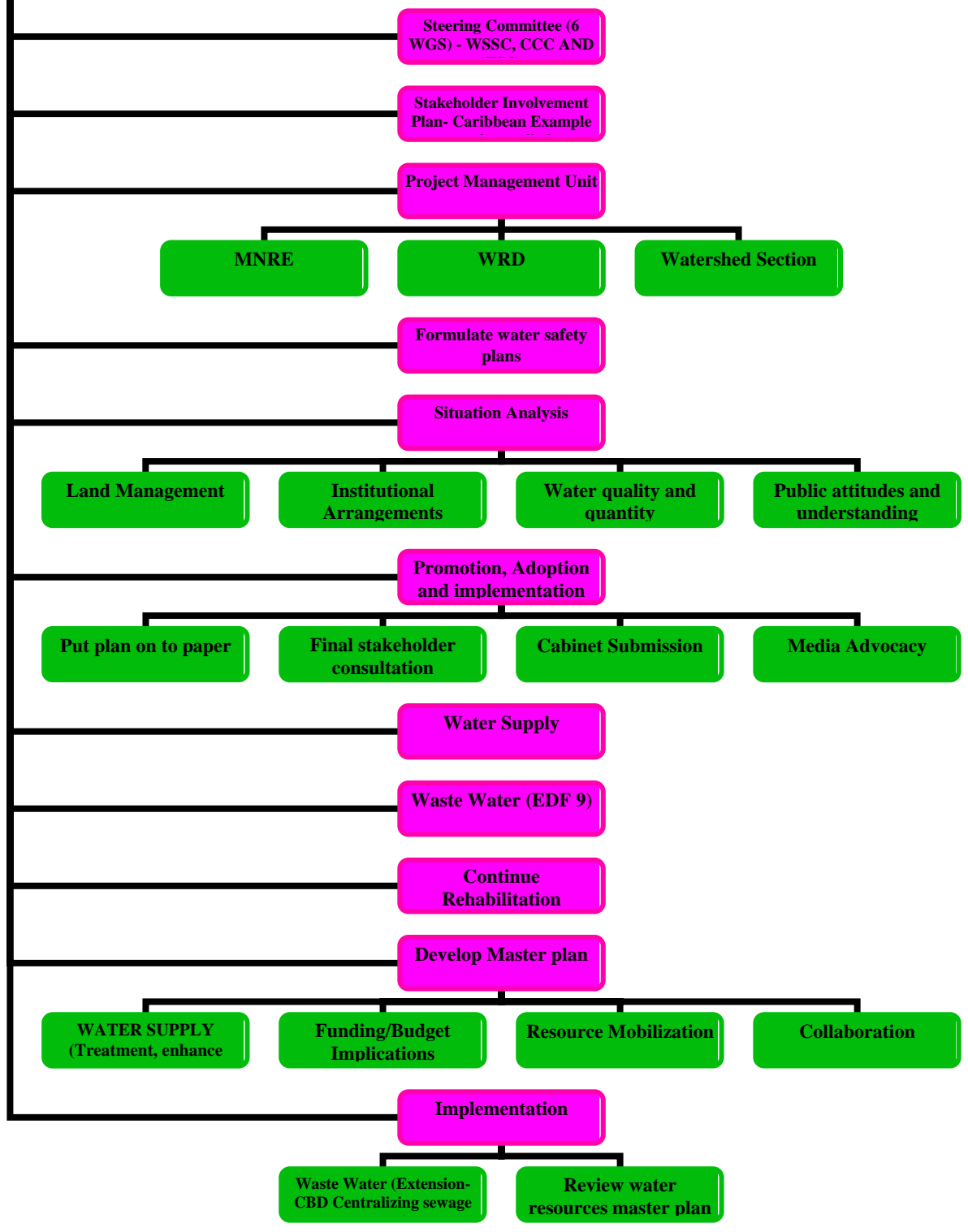
- Diagnostic Report Prepared
- Assessments carried out
- Climate Change
- Socio-Economic issues
- Land Ownership

Vision

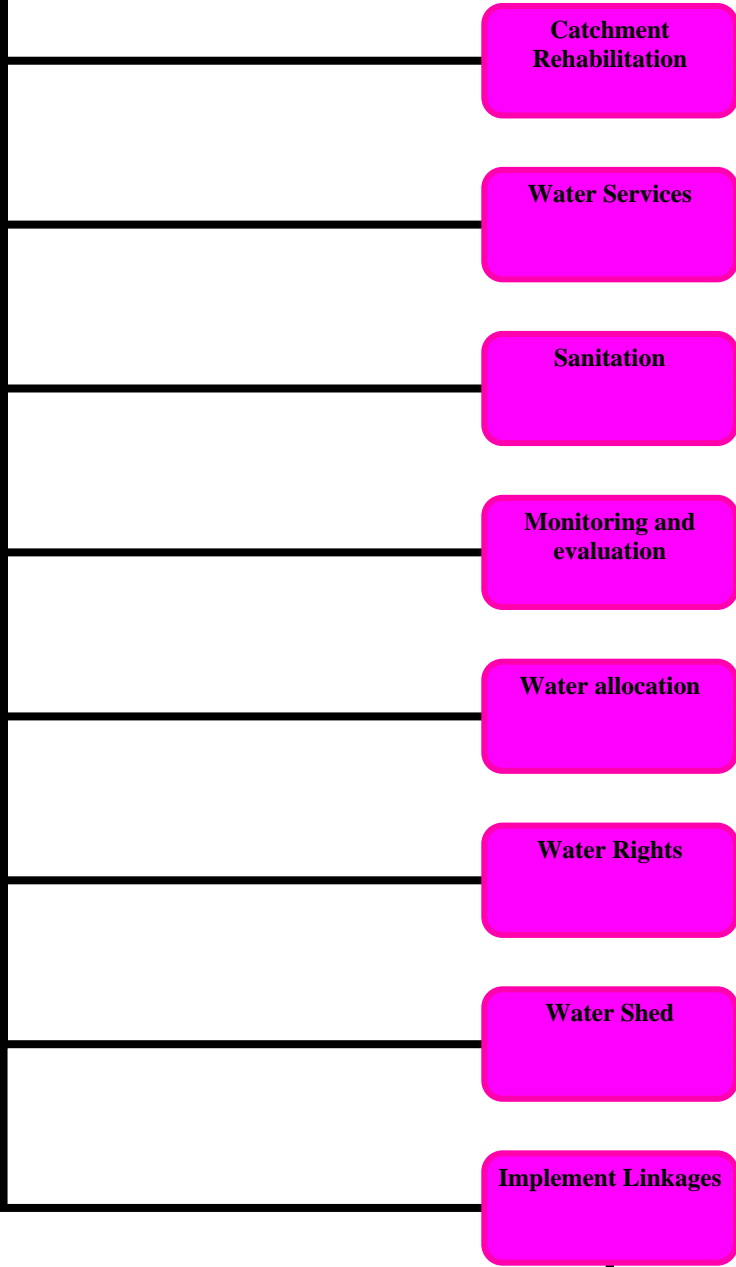
- SDS- "Better quality of life for all"
- IWRM- "Sustainable Management of water resources to ensure a better quality life for all Samoans"

Evaluate IWRM options- Addresses all identified issues

What We Need To Do



Ongoing



SLM (Vaipouli)

V & A Report

NCSA/UNCCD

NAPA