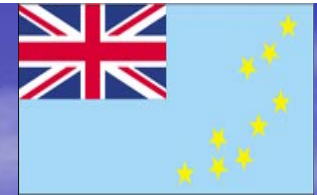




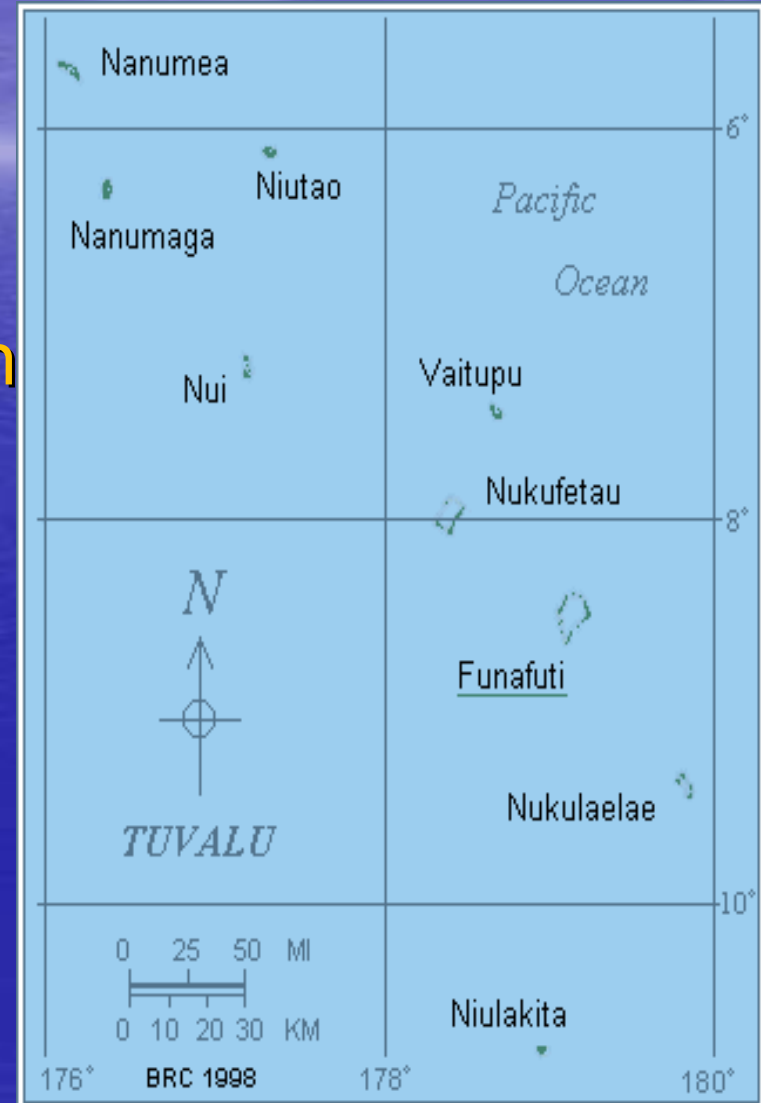
Draft Tuvalu Integrated Water Resource Management Plan

Paulson Panapa
Ministry of Public Utilities & Industries

OVERVIEW OF PRESENTATION



- Introduction
- History & Evolution of the IWRM Plan
- Structure of the Draft IWRM Plan
- IWRM Plan Objectives
- Major Water Problems in Tuvalu as identified in Plan
- The Action Plan – Tasks to be Undertaken
- Problems encountered when IWRM Plan was developed
- The way forward (Future Plans)



History & evolution – IWRM Plan

10-Year Water Master Plan (1992-2002) & Integrated Water Project (IWP):

- Data Assessment
 - ❖ Ground water assessment
 - ❖ Water quantity assessment
 - ❖ Data collected from all islands
- Reporting
 - ❖ Highlighted water problems
- Action
 - ❖ Work toward building a draft water plan to minimise problems and pressure on limited water resources
 - ❖ Tuvalu Water & Sanitation Committee (TWSC) was established
- Initial Plans (Start 2002- 2005)
 - Wide consultation was done
 - ❖ Public consultation
 - ❖ Government official consultation

Tuvalu Water & Sanitation Committee

- Secretary, Ministry of Natural Resources (Chair)
- Secretary, Ministry of Works & Energy
- Director of Public Works
- Environment Department
- Lands & Survey Department
- Office of the Prime Minister
- Waste Management Department
- Health Department
- Agriculture Department
- Meteorological Department
- Fisheries Department
- Various NGOs
- Island Councils (Kaupule)

Structure of the Draft IWRM Plan

- Introduction
- Background to the initiative
- Major Challenges with linkages to Tuvalu's National Strategic Plan & Water Problems in Tuvalu
- The Action Plan (to address the above challenges and problems)
- Funding Assistance

IWRM Plan Objectives

- 1.** Provide sufficient good quality freshwater for all Tuvaluans to enjoy; and
- 2.** Protecting all water resources to enhance the health of our environment and our people.

Major Water Problems in Tuvalu as identified in IWRM Plan

- **Dependency on Rain Water (primary water resource):**
 - Lack storage capacity & vulnerability to droughts
 - Huge consumption of primary water (flush toilets)
 - Absence of Water & Building policies, codes or legislations
- **Salinity of Ground Water**
 - Global warming & sea-level rise
- **Water-borne sanitation systems:**
 - Lack expertise to test quality

The Action Plan – Tasks to be Undertaken

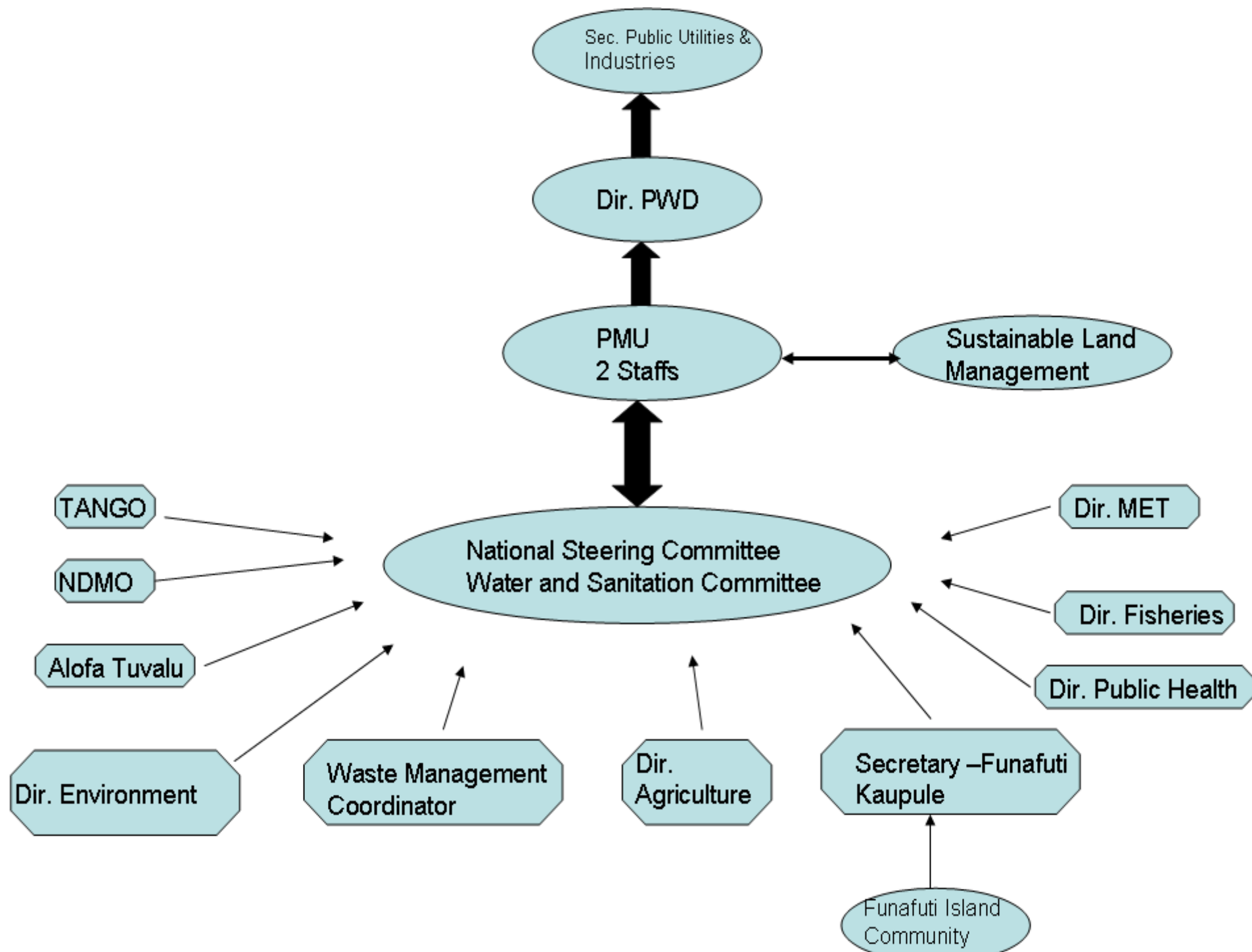
- Increase water storage capacity (Tank distributions & desalination plant)
- **Finding alternative source for use in toilets**
- Introduction of appropriate water policies & legislations – Draft Water Policy, Water Act, Building Codes, new Water Department, etc.
- Water quality testing (boil water)
- Public education and awareness
- Tasks – responsible ministries identified as well as donors being identified to be approached to assist
- Budgetary estimates have also been identified and the possible donors (figures may need to be reviewed)
- Timeline – not spelled out

Problems encountered when developing IWRM Plan

- Difficulty in convincing people to be involved:
 - Keep pressing
- Lack of local expertise:
 - Technical Adviser or locals to be trained
- Sectoral work overlapping
 - Ministry concerned has been identified
 - Core sectoral department has been assigned with different responsibilities toward the water plan (Health, Waste Management, PWD)
 - Review water and sanitation committee
- Tight schedule, work overload
 - Time allocation, appoint officer to deal direct with the issue preferably a senior level manager
 - New Water department or division
- Funding

The Way Forward

- Review the Draft plan (assistance of SOPAC)
- Timeline for Action Plan to be specified
- Ensure cross sectoral roles and responsibilities are cleared (DCC and Cabinet backup)
- Form an executive core team to push forward the water resources governance process
- Endorsement of Minister concerned (Minister for Public Utilities and Industries)
- Cabinet's approval
- Ready to be implemented
- Marketing tool



The background is a vertical gradient of blue, transitioning from a lighter, hazy blue at the top to a deeper, more saturated blue at the bottom. A thin, white horizon line is visible in the upper third of the image. Above the horizon, there are faint, wispy white clouds. The overall effect is a calm, serene sky over a vast body of water.

Thank you for your attention!